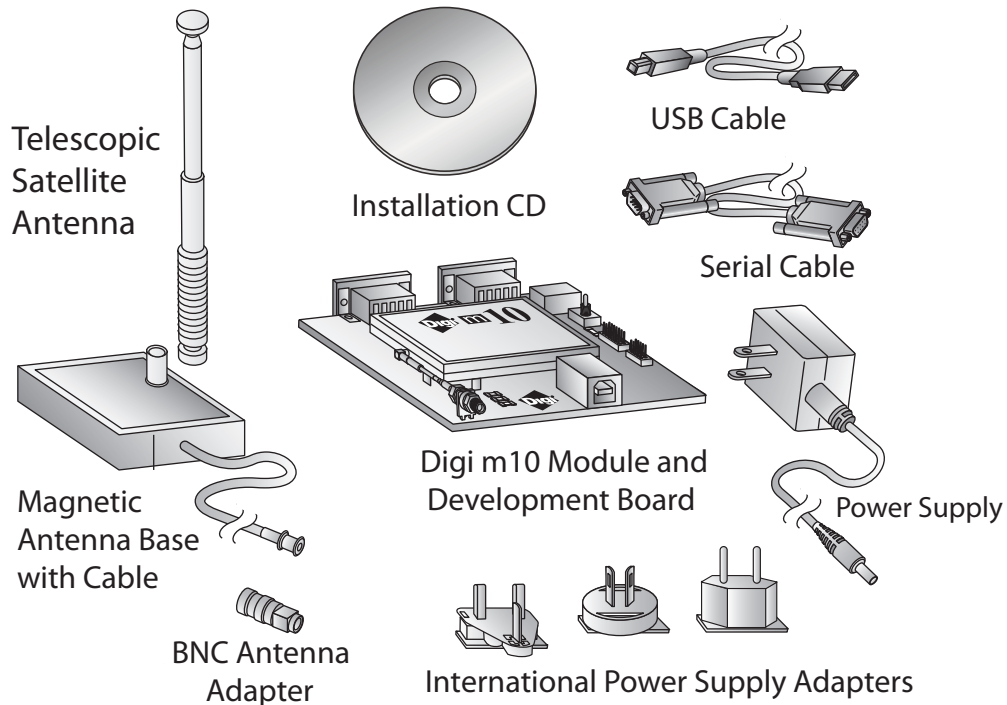


## 1 Verify Kit Contents



## Quick Start Guide

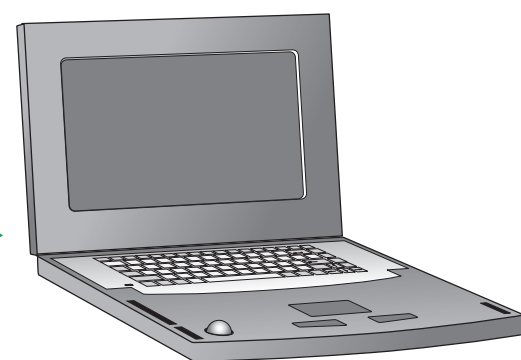
### Digi m10™ Satellite Modem JumpStart Kit



(1P):90033935-88 B

## 2 Install Software and Documentation

- Insert the Digi m10 JumpStart Kit CD into your CD/DVD drive
- If the Digi m10 JumpStart Kit installation does not start automatically, simply double-click on "Setup.exe" in the CD's root folder



**Note:** After installing the software, please first continue to follow the hardware setup instructions below. This Quick Start Guide will then also guide you through the initial setup of your satellite modem and sending a test message using the Setup Wizard of the Satellite Dashboard application you just installed.

## 3 Set Up Your Hardware

- Connect the USB cable to the development board and a corresponding USB port on your PC

**Note:** If a connection via RS232 is preferred instead of USB, simply attach the included serial cable to the DB9 connector on the development board that is marked as "Host Port". Please also note that the DTR line (PWR\_EN) **must** be asserted when using an RS232 connection to the satellite modem.

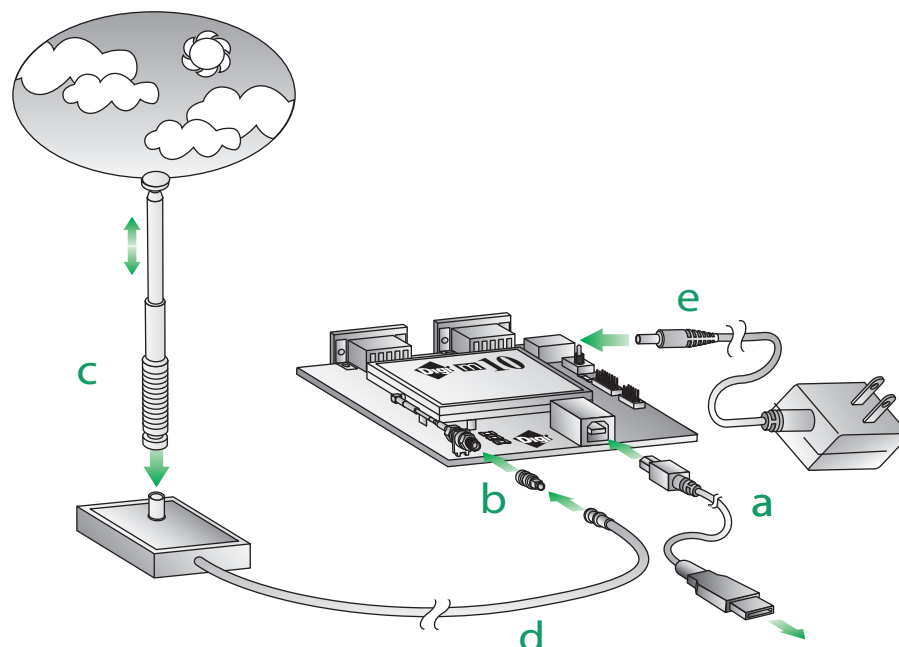
- Screw the BNC antenna adapter on to the development board's antenna connector
- Attach the satellite antenna to the connector on the base by turning the antenna clockwise until it **clicks** into place

**Note:** The antenna base provides a strong magnet for mounting purposes. Keep it away from items and equipment sensitive to magnetic fields (hard disks, tapes, credit cards, etc.) to avoid data loss and/or other damage!

- Connect the base to the antenna connector on the development board using the provided cable and turn the connector on the cable clockwise until it also **clicks** securely into place

**Note:** Make sure the antenna is fully extended and located in an area with an **unobstructed view of the sky**

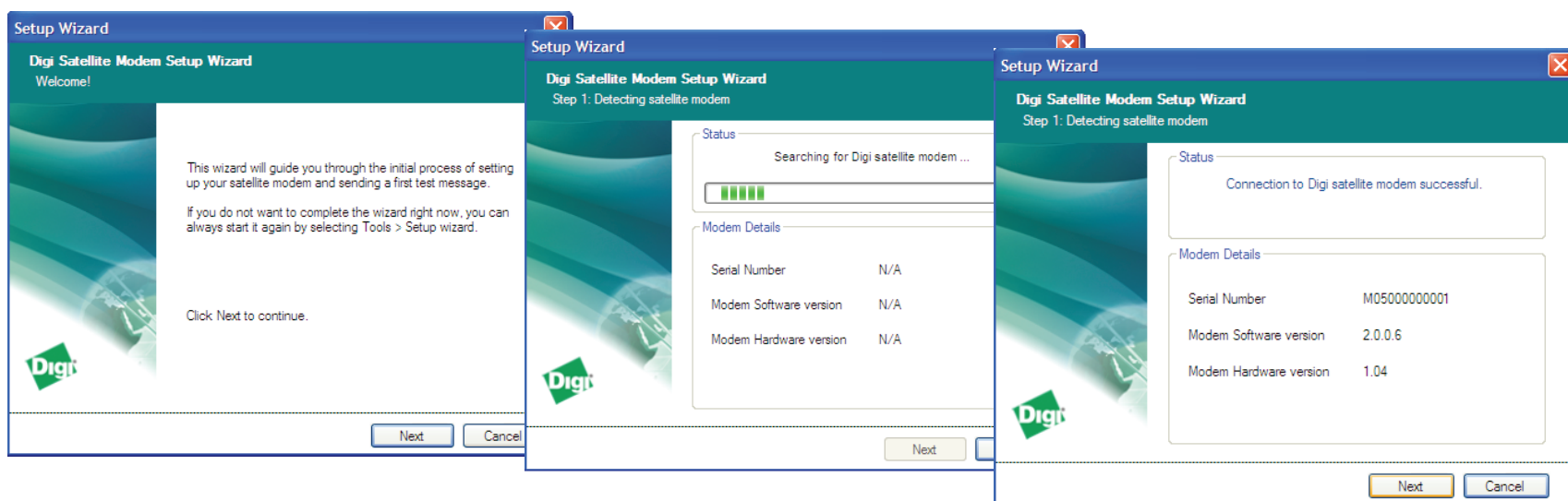
- Connect the power supply to the development board and turn it on using the power switch



## 4 Complete the Setup Wizard

- a After the software installation completed, the Digi Satellite Dashboard and its Setup Wizard launched automatically.

First, the Setup Wizard will guide you through the initial discovery and setup for your Digi satellite modem.



Complete the initial discovery and setup by simply clicking **Next** after each step.


**Note:** The actual serial number and version number information shown on your screen may be different.

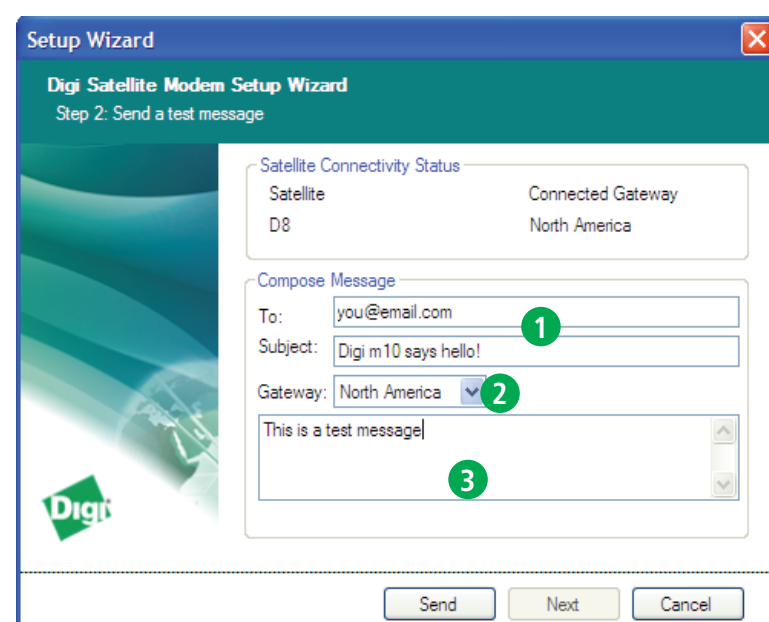
- b Next, after your satellite modem was successfully discovered, the Setup Wizard will allow you to send a test message via satellite.

- 1 Enter the e-mail address of the recipient and the subject line
- 2 Select the corresponding Gateway for your region
- 3 Enter the message that you would like to send

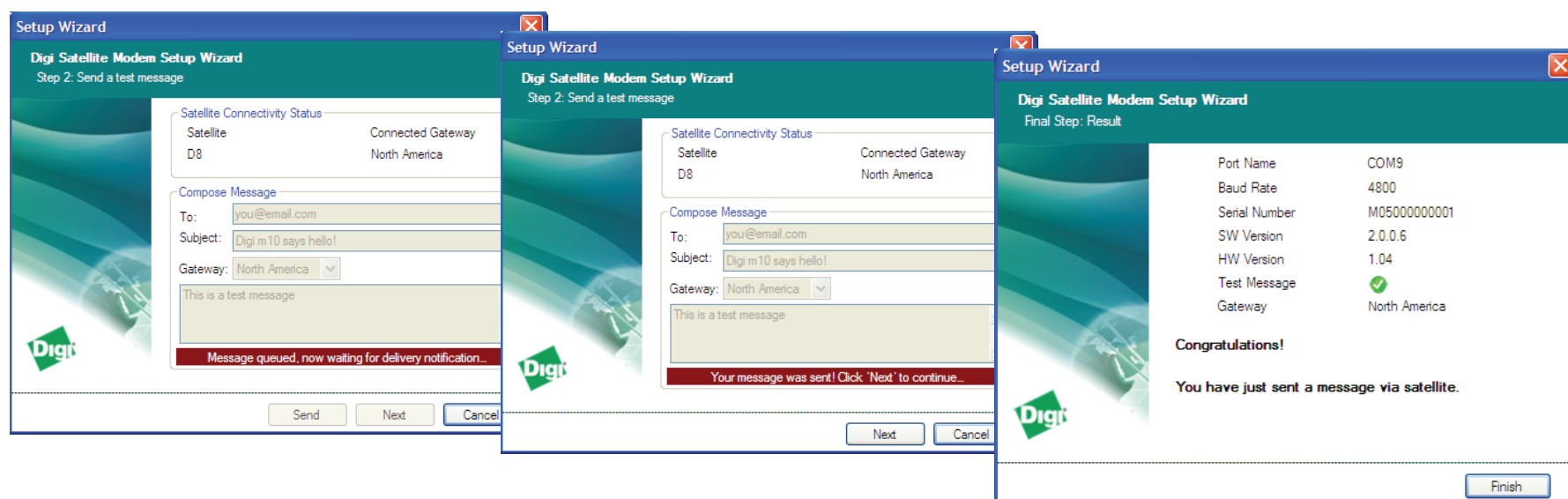
When you are done, click **Send** to queue the message for delivery.

**Note:** Information shown under *Satellite Connectivity Status* will vary. Depending on your actual geographical location, it may take some time before a satellite moves into your area again.

Please also note that you can always check current satellite link status by looking at the *Modem Status* window and verify expected satellite coverage by clicking on the  toolbar icon (Internet connection required).



- c Now the Setup Wizard will wait for a delivery notification indicating successful delivery of your satellite message.



Please note that it may take a short while for a complete message to be transmitted, even if a satellite is currently available.

After the Setup Wizard confirmed the delivery of your message, click **Next** and then **Finish**.

The message will arrive in the e-mail inbox of the specified recipient. **You have just sent your first message via satellite!**

**Note:** You can also send messages to your satellite modem via e-mail. For North America, use the e-mail address `<your-modem-serial#>x1@orbcomm.net`, and for the rest of the world use `<your-modem-serial#>x1@orbcomm2.net`

*Your Digi m10 JumpStart Kit includes free 90-day ORBCOMM M2M satellite network service for initial evaluation and development purposes. It requires no separate service activation, however, completing the online registration process is required to ensure uninterrupted service.*

*The 90-day satellite service starts after the first time you transmit or receive data using your Digi m10 satellite modem. Please avoid excessive amounts of data transfers beyond approximately 100 messages/25 KB per month.*

**If you need help or have any questions, please contact the Digi technical support experts by visiting our support web site at [www.digi.com/support](http://www.digi.com/support)**