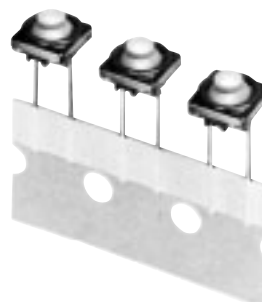


## 8 mm Square Long Travel 2R Light Touch Switches

Type: **EVQQJ**



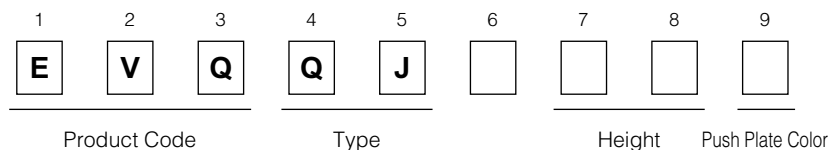
### ■ Features

- External dimensions : 8.0 mm×8.0 mm, Height 5.0 mm, 5.5 mm, 6.1 mm (Including the push plate)
- Long life (self-cleaning)
- Low contact resistance with metal contacts
- Small bouncing

### ■ Recommended Applications

- Operating Switches for car air conditioners, car audio systems, etc.
- Push switches for camcorders
- Ten-key switches for telephones

### ■ Explanation of Part Numbers



### ■ Specifications

Type		Snap action/Push-on 1-pole 1-throw SPST			
Electrical	Rating	10 $\mu$ A 2 Vdc to 5 mA 12 Vdc. (Resistive load)			
	Contact Resistance	200 m $\Omega$ max.			
	Insulation Resistance	50 M $\Omega$ min. (at 100 Vdc)			
	Dielectric Withstanding Voltage	250 Vac for 1 minute			
	Bouncing	10 ms max. (ON, OFF)			
Mechanical	Operating Force	0.8 N $\pm$ 0.4 N	1.3 N $\pm$ 0.6 N	2.5 N $\pm$ 0.6 N	3.0 N $\pm$ 0.6 N
	Travel	1.0 mm	1.0 mm	1.2 mm	1.75 mm
Endurance	Operating Life	1000000 cycles min.	100000 cycles min.	100000 cycles min.	100000 cycles min.
Operating Temperature		-20 °C to +70 °C			
Storage Temperature		-40 °C to +85 °C (Bulk) -20 °C to +40 °C (Taping)			
Minimum Quantity/Packing Unit		1000 pcs. Radial Taping (Reel Pack)			
Quantity/Carton		10000 pcs.			

### ■ Application Notes:

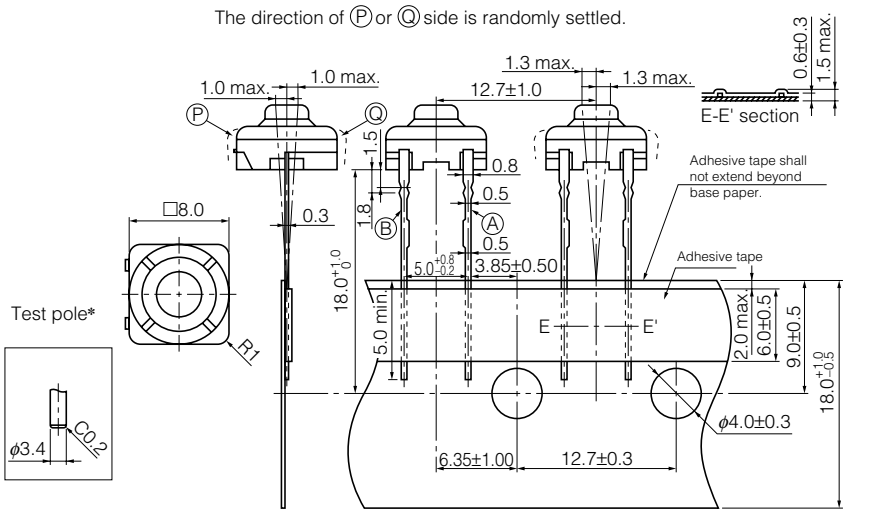
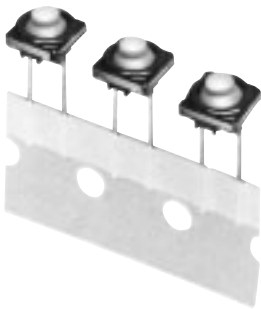
- Washing is not allowed.
- Inclination of pushing knob shall be 3 ° max.

Design and specifications are each subject to change without notice. Ask factory for the current technical specifications before purchase and/or use. Should a safety concern arise regarding this product, please be sure to contact us immediately.

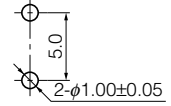
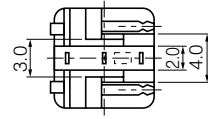
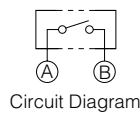
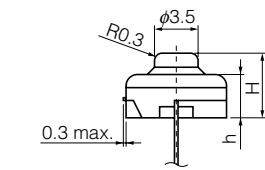
■ Dimensions in mm (not to scale)

EVQQJ

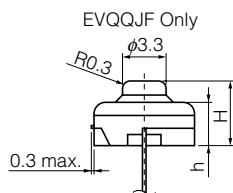
(Radial Taping)



JIS C0806-2 shall be applied to the items not specified here.



PWB mounting hole for reference  
 (Pitch tolerance:  $\pm 0.1$ )  
 View from mounting side



Part Numbers	Operating Force	Travel	H=Height	h=Mounting Base	Push Plate Color	Operating Life
EVQQJJ05Q	0.8 N	1.0 mm	5.0 mm	3.5 mm max.	Grey	1000000 cycles
EVQQJE05D	1.3 N	1.0 mm	5.0 mm	3.6 mm max.	Orange	100000 cycles
EVQQJD05B	2.5 N	1.2 mm	5.5 mm	3.8 mm max.	Blue	100000 cycles
EVQQJF06Q	3.0 N	1.75 mm	6.1 mm	4.0 mm max.	Grey	100000 cycles

Design and specifications are each subject to change without notice. Ask factory for the current technical specifications before purchase and/or use. Should a safety concern arise regarding this product, please be sure to contact us immediately.