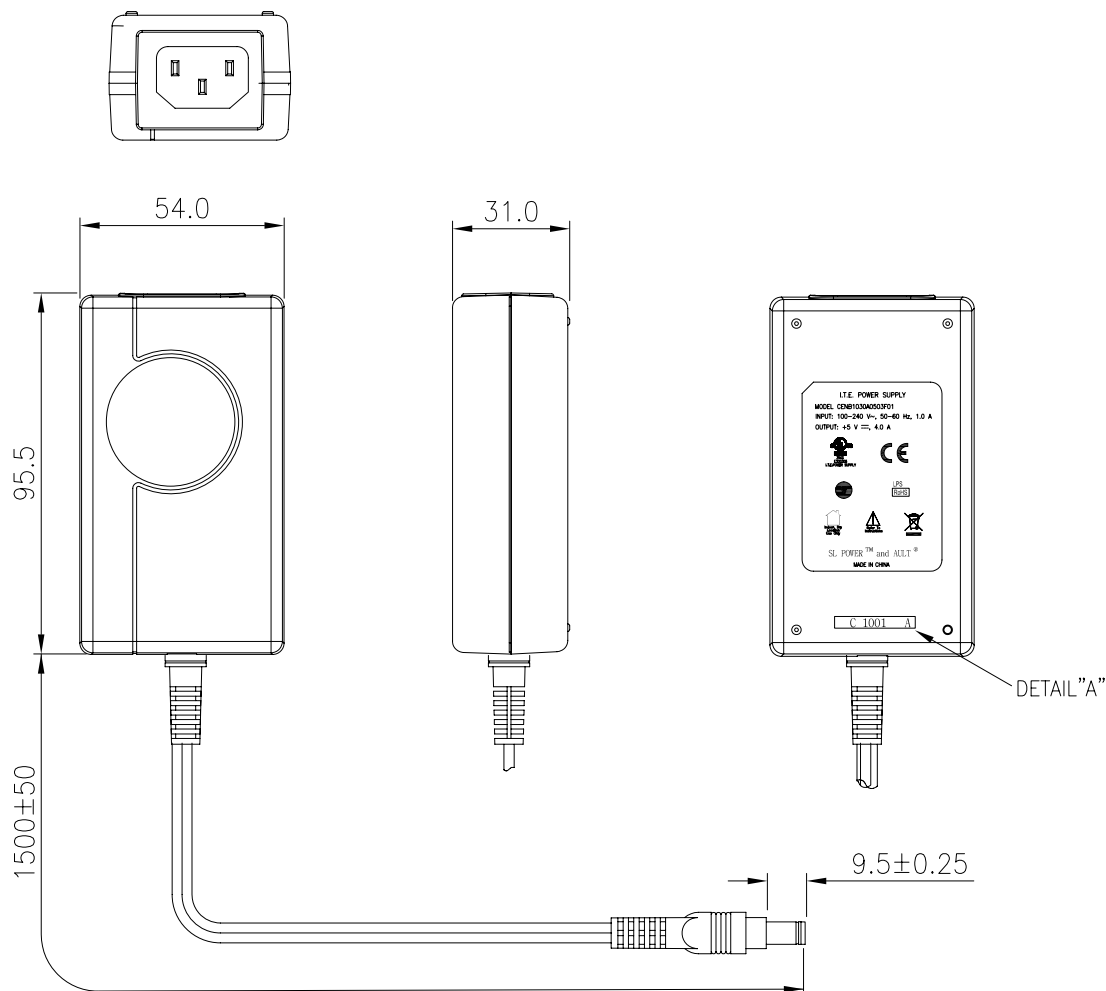


"X" – This marking is mechanically importance point, Please check these point when IQC inspection.

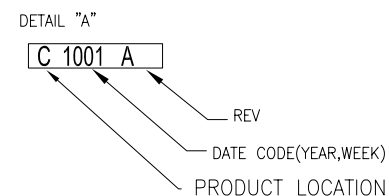
"X" – This marking represent alphabet

REVISIONS					
REV	Q'TY	DESCRIPTION	ECO NO	DATE	CHANGE
△	1	RELEASED		15-Apr-10	KHLEE
△	1	CHANGE CASE AND LABEL		07-MAR-11	KHLEE



NOTES.

- COVER, BASE, INLET SPECIFICATION
COVER(6135440) – PC UL94 V0, BL
BASE (6135442) – PC UL94 V0, BL
COVER, BASE COLOR – BLACK.
- OUTPUT CORD : 1508295121
CABLE P/N : 6871127 18AWG, 2CND,SPT-1
OVERMOLD : 6131450 , CONNECT : 6203455, #3
STRAIN RELIEF : 6135068
- BASE LABEL – 6801177001



IMPRESSION STAMP LOCATION

SUPPLEMENTARY INFORMATION FIRST USED		OUTLINE DRAWING -			
DRAWN BY	KHLEE	SIZE	PART NUMBER.		REV
CHECKED	-	A4	CENB1030A0503F01		B
APPROVED	-				
UNITS	mm	NON SCALE			SHEET 1 OF 1