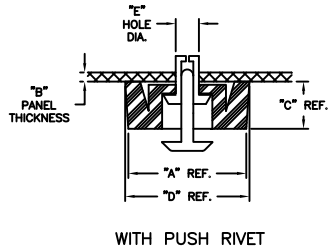
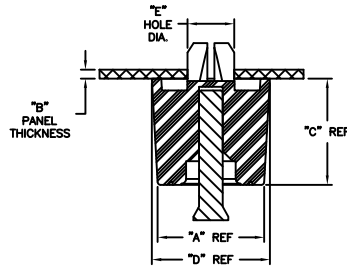


WITH DRIVE SCREW  
FIGURE 1



WITH PUSH RIVET  
FIGURE 2



WITH RIVET PIN  
FIGURE 3

PART NO.	FOOT MAT'L	"A" REF.	"B" THKS. RANGE	"C" REF.	"D" REF.	"E" HOLE DIAMETER	FIGURE
FF-001B	RMS-76	.79 (20)	.039-.091 (1.0-2.3)	.55 (14)	.95 (24)	.197-.201(5.0-5.1)	1
FF-004B		.71 (18)					
FF-003-P3x5.5B	RMS-42	.53 (13.5)	.031-.071 (0.8-1.8)	.22 (5.5)	.56 (14.2)	.122 (3.1)-.126 (3.2)	2
FF-005-P4x5B	RMS-76	.79 (20)	.031-.071 (0.8-1.8)	.17 (4.2)	.83 (21)	.161-.165 (4.1-4.2)	
FF-005-P4x6B			.071-.111 (1.8-2.8)				
FF-005-P4x7B			.114-.146 (2.9-3.7)				
FF-005-P4x8B			.150-.189 (3.8-4.8)				
FF-006-P4x6B			.024-.039 (0.6-1.0)				
FF-006-P4x7B			.039-.079 (1.0-2.0)				
FF-006-P4x8B	.079-.118 (2.0-3.1)	.24 (6)	.59 (15)	.200 (5.1)-.205 (5.2)			
FF-006-P5x6.5B	.031-.047 (0.8-1.2)						
FF-006-P5x7.5B	.051-.091 (1.3-2.3)						
FF-008-P4x6B	.031-.071 (0.8-1.8)						
FF-008-P4x7B	.075-.110 (1.9-2.8)						
FF-008-P4x8B	.114-.157 (2.9-4.0)						
FF-009-P4x6B	RMS-76	.79 (20)	0-.031 (0-0.8)	.31 (8)	.83 (21)	.161-.165 (4.1-4.2)	
FF-009-P4x7B			.031-.079 (0.8-2.0)				
FF-009-P4x8B			.083-.118 (2.1-3.0)				
FF-010-P4x7B	RMS-76	.55 (14)	.039-.079 (1.0-2.0)	.35 (9)	.59 (15)	.161-.165 (4.1-4.2)	
FF-010-P4x8B			.079-.118 (2.0-3.1)				
FF-13-P3.5x4.5B	RMS-76	.39 (10)	.020-.047 (0.5-1.2)	.16 (4)	.43 (10.8)	.142-.146 (3.6-3.7)	
FF-13-P3.5x5.5B			.047-.079 (1.2-2.0)				
FF-13-P3.5x6.0B			.059-.087 (1.5-2.2)				
FF-13-P3.5x7.0B			.098-.126 (2.5-3.2)				
FF-026-M40	RMS-416	.71 (18)	.020-.047 (0.5-1.2)	.71 (18)	.79 (20)	.315 (8)-.319 (8.1)	3

- NOTES:  
 1. MATERIAL:  
 FIGURE 1: DRIVE SCREW: ACETAL UL94 HB (RMS-39)  
 GROMMET: NYLON 6 UL94 V-2 (RMS-52)  
 FOOT: THERMOPLASTIC ELASTOMER UL94 HB (RMS-76)  
 FIGURE 2: PUSH RIVET ACETAL UL94 HB (RMS-63)  
 GROMMET: NYLON 6 UL94 V-2 (RMS-52)  
 FOOT: THERMOPLASTIC ELASTOMER UL94 HB (RMS-76) OR (RMS-42)  
 FIGURE 3: RIVET PIN: POLYPROPYLENE UL94 HB (RMS-126)  
 FOOT: THERMOPLASTIC ELASTOMER UL94 HB (RMS-416)  
 2. COLOR: BLACK

M SEE CO 200773 FOR CHANGES SK 04.30.12		L SEE CO 200638 FOR CHANGES SK 03.16.11		- SEE ENGINEERING FOR REV A-K -		REV DESCRIPTION ENGR DATE	
TITLE: FAST FEET				DWG IN IN (MM) FINAL		PART # PRINT TYPE	
TOLERANCES UNLESS NOTED .XX=±.010 .XXX=±.005 FRAC=±1/64 ANG=±1'		FILE # FF		DWN: P.B. APP:		SEE TABLE	
		MAT'L: SEE NOTES		DT: 04-29-94 DT:		CA	
		RE: RICHCO, INC.		RICHCO INC. PO BOX 804238, CHICAGO, 60680 (773) 539-4060			