

# SMD Power Inductor CDRH60D43R



## Description

- Ferrite drum core construction
- Magnetically shielded
- L × W × H: 6.3 × 6.3 × 4.5 mm Max.
- Product weight: 0.55g(Ref.)
- Moisture Sensitivity Level: 1
- RoHS compliance.

## Environmental Data

- Operating temperature range: -40°C ~ +105°C (including coil's self temperature rise)
- Storage temperature range: -40°C ~ +105°C
- Solder reflow temperature: 260 °C peak.

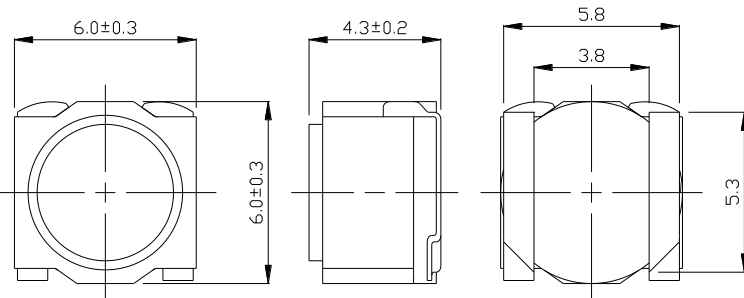
## Packaging

- Carrier tape and reel packaging
- 13.0" diameter reel
- 1500pcs per reel

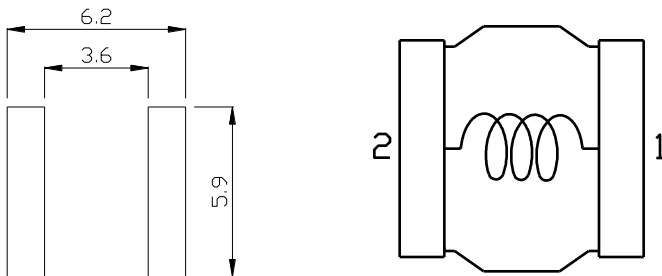
## Applications

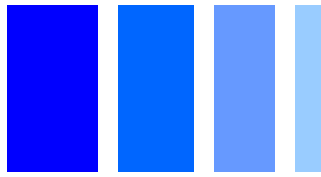
- Ideally used in slim TV, car navigation etc as DC-DC converter inductors.

## Dimension - [mm]



## Land pattern and Schematics - [mm]





### Electrical Characteristics

Part No.	Stamp	Inductance ( $\mu\text{H}$ ) [Within] ※1	D.C.R. ( $\text{m}\Omega$ ) [within ](at $20^\circ\text{C}$ )	Saturation current (A) ※2		Temperature rise current (A) ※3
				(at $20^\circ\text{C}$ )	(at $105^\circ\text{C}$ )	
CDRH60D43RNP-1R5NC	B	$1.5 \pm 30\%$	$15 \pm 25\%$	5.80	4.80	5.20
CDRH60D43RNP-2R2NC	C	$2.2 \pm 30\%$	$17 \pm 25\%$	4.80	4.00	4.40
CDRH60D43RNP-3R3NC	D	$3.3 \pm 30\%$	$22 \pm 25\%$	4.40	3.60	4.10
CDRH60D43RNP-4R7MC	E	$4.7 \pm 20\%$	$26 \pm 25\%$	3.50	2.80	3.80
CDRH60D43RNP-6R8MC	F	$6.8 \pm 20\%$	$31 \pm 25\%$	3.10	2.50	3.45
CDRH60D43RNP-100MC	G	$10 \pm 20\%$	$38 \pm 25\%$	2.60	2.00	2.90
CDRH60D43RNP-150MC	H	$15 \pm 20\%$	$78 \pm 25\%$	2.10	1.60	1.98
CDRH60D43RNP-220MC	J	$22 \pm 20\%$	$118 \pm 20\%$	1.80	1.30	1.55
CDRH60D43RNP-330MC	K	$33 \pm 20\%$	$178 \pm 20\%$	1.45	1.12	1.33
CDRH60D43RNP-470MC	L	$47 \pm 20\%$	$270 \pm 20\%$	1.20	0.90	1.04
CDRH60D43RNP-680MC	M	$68 \pm 20\%$	$325 \pm 20\%$	1.00	0.75	0.90
CDRH60D43RNP-101MC	N	$100 \pm 20\%$	$415 \pm 20\%$	0.85	0.66	0.82
CDRH60D43RNP-151MC	P	$150 \pm 20\%$	$670 \pm 20\%$	0.68	0.52	0.65
CDRH60D43RNP-221MC	Q	$220 \pm 20\%$	$1030 \pm 20\%$	0.56	0.44	0.49
CDRH60D43RNP-331MC	R	$330 \pm 20\%$	$1325 \pm 20\%$	0.47	0.38	0.45

※1 Measuring condition Inductance at 100kHz .

※2 Saturation current: The value of DC current when the inductance decreases to 70% of its nominal.

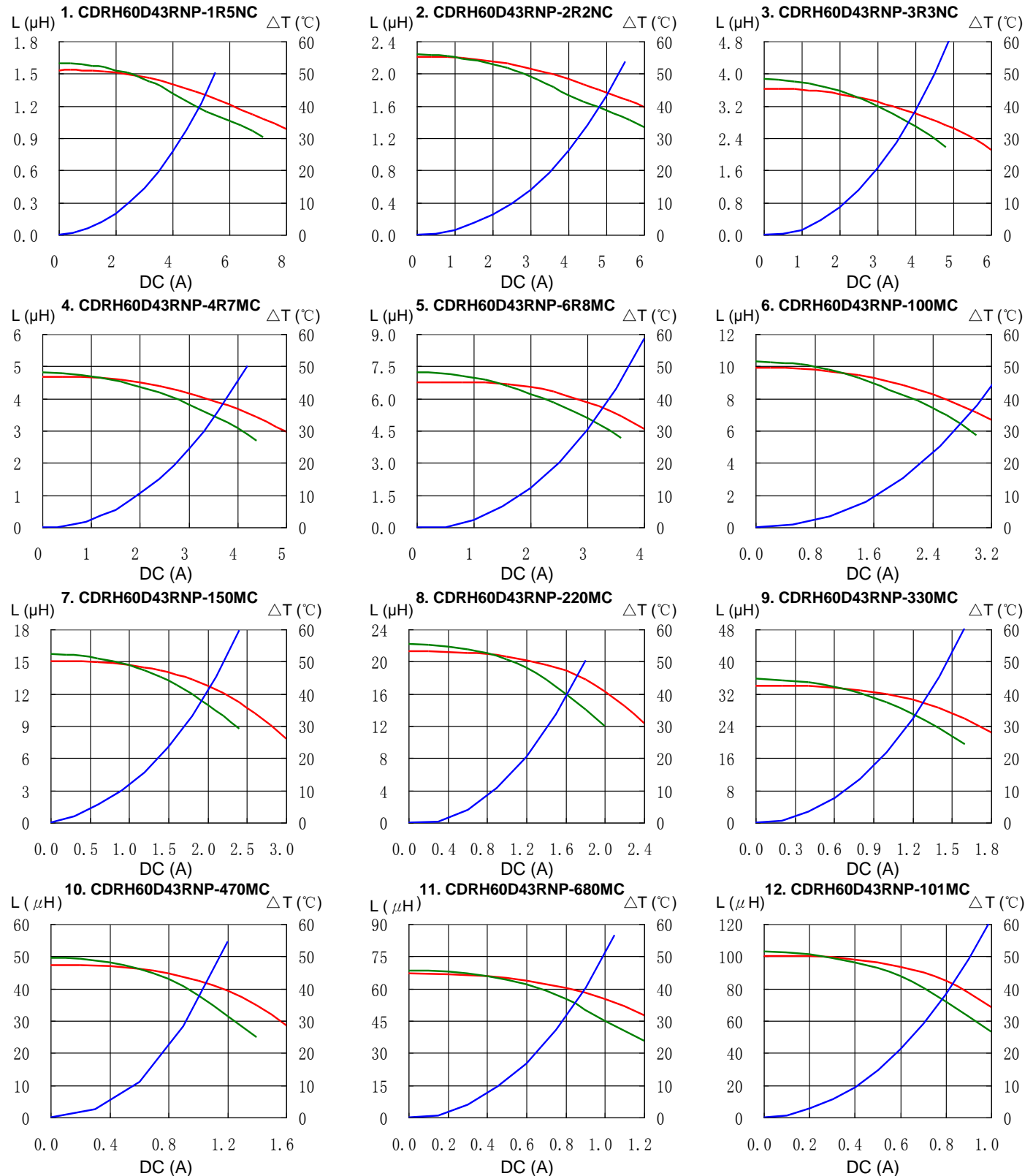
※3 Temperature rise current: The value of DC current when the temperature rise is  $\Delta T = 40^\circ\text{C}$  ( $T_a = 20^\circ\text{C}$ ).

# SMD Power Inductor CDRH60D43R

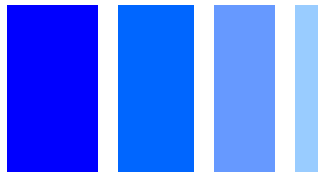


## Saturation Current & Temperature Rise Graph

— L (20°C) — L (105°C) —  $\Delta T$

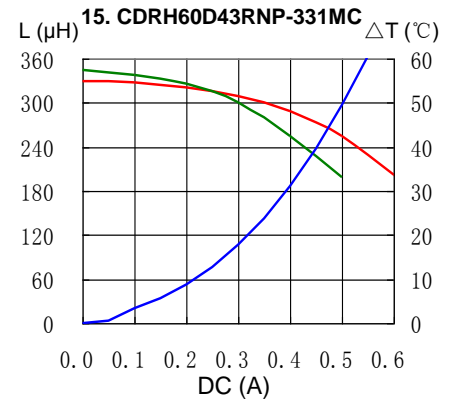
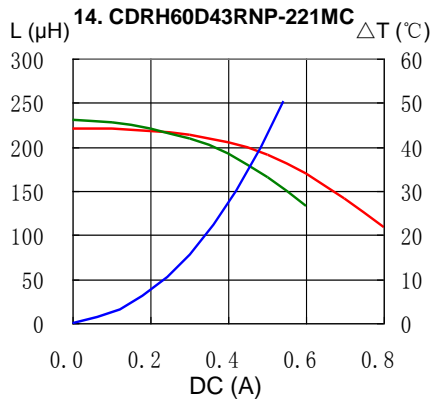
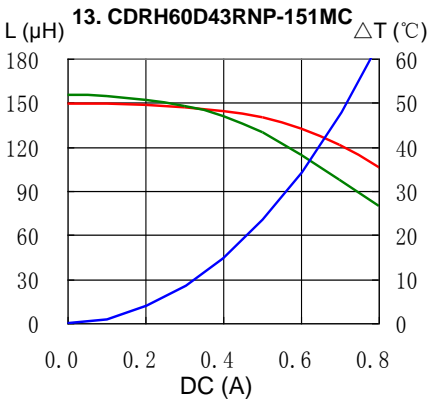


# SMD Power Inductor CDRH60D43R



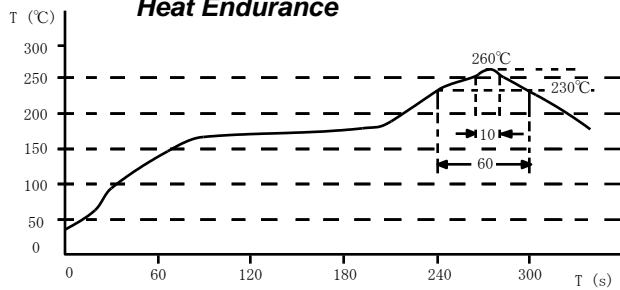
## Saturation Current & Temperature Rise Graph

— L (20°C) — L (105°C) —  $\Delta T$

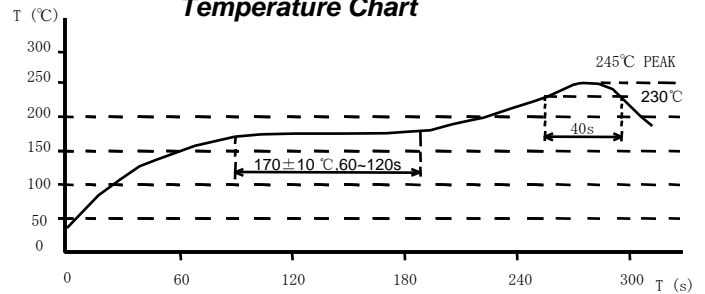


## Solder Reflow Condition

### Heat Endurance



### Temperature Chart



Please refer to the sales offices on our website - <http://www.sumida.com>

### Hong Kong

Tel. +852-2880-6781  
FAX. +852-2565-9600  
[sales@hk.sumida.com](mailto:sales@hk.sumida.com)

### Saitama(Japan)

Tel. +81-48-691-7300  
FAX. +81-48-691-7340  
[sales@jp.sumida.com](mailto:sales@jp.sumida.com)

### Chicago

Tel. +1-847-545-6700  
FAX. +1-847-545-6720  
[sales@us.sumida.com](mailto:sales@us.sumida.com)

### Shanghai

Tel. +86-21-5836-3299  
FAX. +86-21-5836-3266  
[shanghai.sales@cn.sumida.com](mailto:shanghai.sales@cn.sumida.com)

### Seoul

Tel. +82-2-6237-0777  
FAX. +82-2-6237-0778  
[sales@kr.sumida.com](mailto:sales@kr.sumida.com)

### Obernzell

Tel. +49-8591-937-0  
FAX. +49-8591-937-103  
[contact@eu.sumida.com](mailto:contact@eu.sumida.com)

### Shenzhen

Tel. +86-755-8291-0228  
FAX. +86-755-8291-0338  
[shenzhen.sales@cn.sumida.com](mailto:shenzhen.sales@cn.sumida.com)

### Singapore

Tel. +65-6296-3388  
FAX. +65-6841-4426  
[sales@sg.sumida.com](mailto:sales@sg.sumida.com)

### Neumarkt

Tel. +49-9181-4509-110  
FAX. +49-9181-4509-310  
[infocomp@eu.sumida.com](mailto:infocomp@eu.sumida.com)

### Taipei

Tel. +886-2-8751-2737  
FAX. +886-2-8751-2738  
[sales@tw.sumida.com](mailto:sales@tw.sumida.com)

### San Jose

Tel. +1-408-321-9660  
FAX. +1-408-321-9308  
[sales@us.sumida.com](mailto:sales@us.sumida.com)