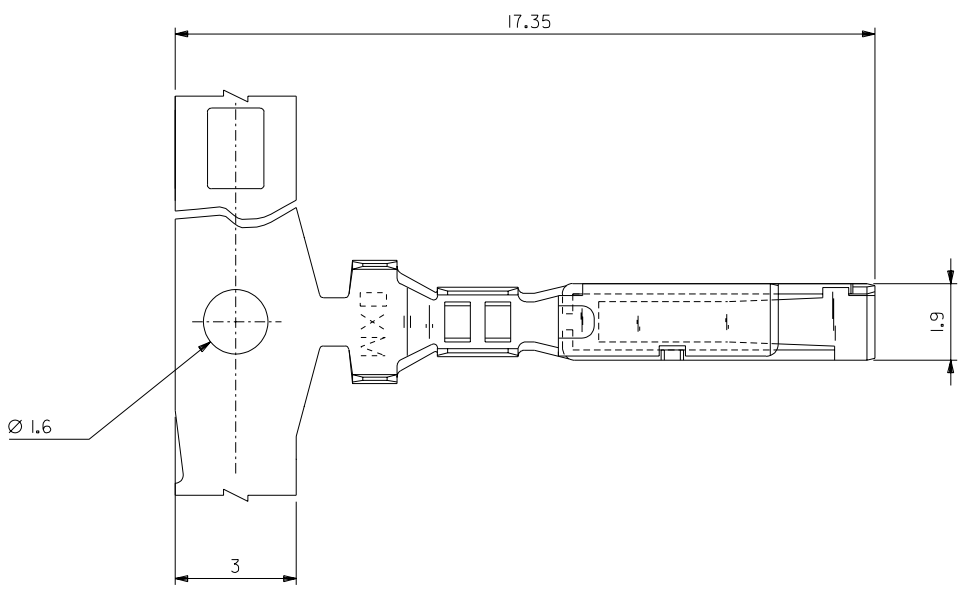
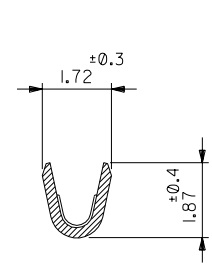


DWG. NO. SD-56188-002

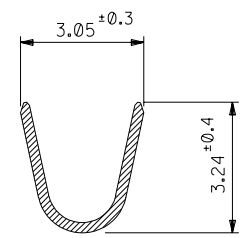


注記
NOTES

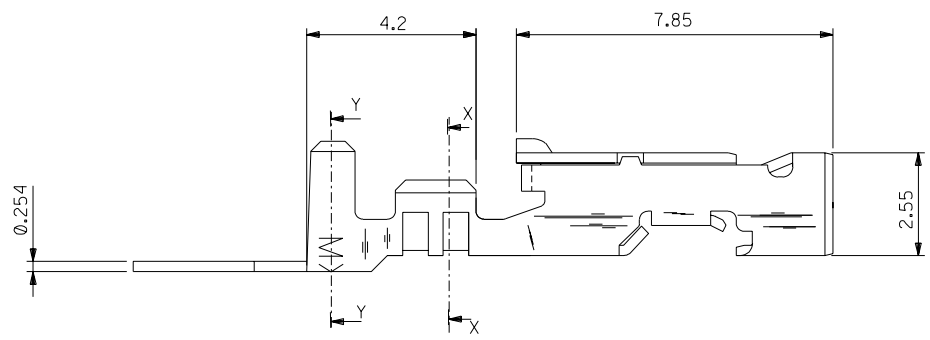
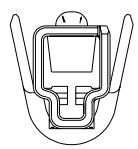
1. 使用材料 : リン青銅, 錫メッキ (t=0.254)
MATERIAL : PRE-TINNED PHOSPHOR BRONZE (t=0.254)
2. 適合ハウジング : 51284&51347シリーズ
APPLICABLE HOUSING : 51284 & 51347 SERIES



SECT. X-X



SECT. Y-Y



56188-8100	バラ状 LOOSE
56188-8000	連鎖状 CHAIN
MATERIAL NO.	端子形状 FORM

DO NOT SCALE DRAWING

64NO. DRWN: CH'K: APPR:	63NO. DRWN: CH'K: APPR:	62NO. DRWN: CH'K: APPR:	REVISED 61NO. J2003-2363 DRWN: H.II CH'K: K.ASAKAWA APPR: T.YAMAGUCHI	RELEASED 60NO. J2002-2040 DRWN: H.II '02/02/18 CH'K: K.ASAKAWA APPR: T.YAMAGUCHI	MATERIAL 材料 注記参照 SEE NOTES	GENERAL TOLERANCES: (UNLESS SPECIFIED) 一般公差
			A	0	FINISH 仕上げ //	10 UNDER 未満 ±0.2 10 OVER 30 UNDER 未満 ±0.25 30 OVER 以上 ±0.3
					WIRE RANGE 適用線径範囲 AWG #22 - #26	DRAWN BY & DATE H.II '02/02/18
					INS. RANGE 被覆外径 Ø1.7MAX.	CHECKED BY & DATE K.ASAKAWA '02/02/18
						APPROVED BY & DATE T.YAMAGUCHI '02/02/18

56188-8*00		MODEL NO.	DIMENSIONS:		SHT	REV	
SCALE	DESIGN UNITS	<input checked="" type="checkbox"/> 2θ PROJECTION	<input type="checkbox"/> mm <input type="checkbox"/> INCH	<input type="checkbox"/> mm <input type="checkbox"/> ONLY	<input type="checkbox"/> INCH <input checked="" type="checkbox"/> mm	<input type="checkbox"/> INCH <input type="checkbox"/> mm	
TITLE:		3.3 mm WIRE TO BOARD CONN. CRIMP RECEPTACLE				MOLEX INCORPORATED	
CAD FILENAME	MATERIAL NO.	DRAWING NO.	SHEET NO.		SIZE		
56187002.S01	SEE CHART	SD-56188-002	1 OF 1		B		
THIS DRAWING CONTAINS INFORMATION THAT IS PROPRIETARY TO MOLEX INCORPORATED AND SHOULD NOT BE USED WITHOUT WRITTEN PERMISSION.						EN-02J(097) MXJ-54	