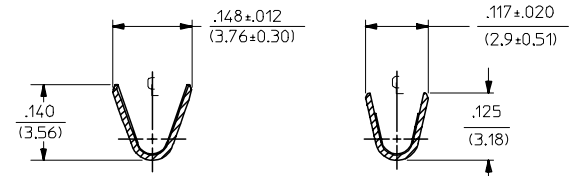
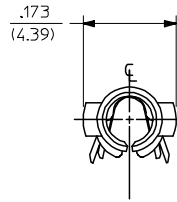
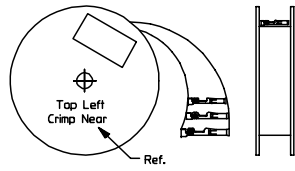


| PART NO.   | ENG. NO.      |
|------------|---------------|
| 02-09-1119 | 1381-A(P901)L |
| 02-09-1117 | 1381-A(P901)  |
| 02-09-1115 | 1381-A(P901)1 |
| 02-09-5133 | 1381-A(P591)L |
| 02-09-5130 | 1381-A(P591)  |
| 02-09-5142 | 1381-A(P550)L |
| 02-09-5143 | 1381-A(550)   |



SECT. "A-A"

SECT. "B-B"

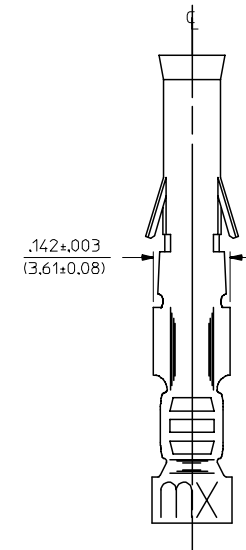
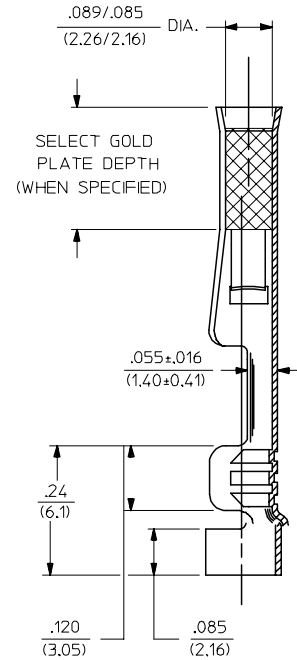
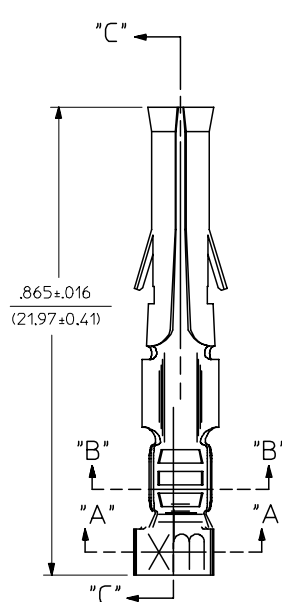


STANDARD CHAIN

LEGEND

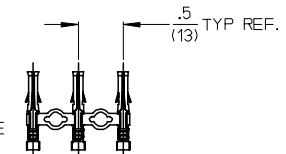
1381-A(\*\*\*\*)\*

- FORM BLANK = STD. CHAIN
- 1 = STD. CHAIN WITH INTERLEAF PAPER
- L = LOOSE
- FINISH CODE
- P = PREPLATE
- BLANK = POSTPLATE



SECT. "C-C"

CHAIN FORM FULL SCALE



NOTES:

- MATERIAL: BRASS
- FINISH:
  - 901 HOT TIN DIP .000020/(0.00051) MIN.
  - 591 SELECT GOLD PLATE .000050/(0.00127) MIN. IN CONTACT AREA, OVER .000050/(0.00127) MIN. NICKEL OVERALL WITH .000010/(0.00025) MAX. GOLD FLASH OVERALL.
  - 550 SELECT GOLD PLATE .000015/(0.00038) MIN. IN CONTACT AREA, OVER .000030/(0.00076) MIN. NICKEL OVERALL WITH .000010/(0.00025) MAX. GOLD FLASH OVERALL.
- PRODUCT SPECIFICATION PS-43660-9999.
- PACKAGING INFORMATION: NOT AVAILABLE
- TERMINAL FOR USE WITH .093/(2.36) SERIES HOUSINGS AND WILL ACCEPT 18-22 AWG WIRE
- INSERTION FORCE: 3.5 LBS. MAX. WHEN TERMINAL IS INSERTED INTO AN .093 SERIES HOUSING.
- TERMINAL RETENTION: 20 LBS. MIN. FROM HOUSING.

|  |                             |                                       |            |                 |            |   |              |                        |  |  |
|--|-----------------------------|---------------------------------------|------------|-----------------|------------|---|--------------|------------------------|--|--|
| REMOVE DIMPLE P/NS<br>EC NO: UCP2006-2900<br>DRAWN/PRI/DOR 2006/06/29<br>CHKD: AEL/HAG 2006/07/05<br>APPR: FSM/TH 2006/07/05 | QUALITY SYMBOLS<br>=0<br>=0 | GENERAL TOLERANCES (UNLESS SPECIFIED) |            | DIMENSION STYLE |            | SCALE   | DESIGN UNITS | THIRD ANGLE PROJECTION |  |  |
|  |                             | mm                                    | INCH       | IN/MM           |            | 6:1   | INCH         |                        |  |  |
|  |                             | 4 PLACES ± --- ± ---                  |            | DRAWN BY        | DATE       | TITLE   |              |                        |  |  |
|  |                             | 3 PLACES ± --- ± .005                 |            | GEP             | 1987/11/06 | CRIMP TERMINAL, FEMALE<br>.093/(2.36) DIA.<br>18-22 AWG   |              |                        |  |  |
| 2 PLACES ± 0.13 ± .010   |                             | CHECKED BY                            | DATE       | MATERIAL NO.    |            |   |              |                        |  |  |
| 1 PLACE ± 0.25 ± ---   |                             | RW                                    | 1987/11/06 | DOCUMENT NO.    |            |   |              |                        |  |  |
| ANGULAR ±1/2°  |                             | APPROVED BY                           | DATE       | MATERIAL NO.    |            | DOCUMENT NO.  |              | SHEET NO.              |  |  |
|  |                             | RAS                                   | 1987/11/06 | SEE CHART       |            | SD-1381-*   |              | 1 OF 1                 |  |  |
| DRAFT WHERE APPLICABLE MUST REMAIN WITHIN DIMENSIONS   |                             | MATERIAL NO.                          |            | SIZE            |            | THIS DRAWING CONTAINS INFORMATION THAT IS PROPRIETARY TO MOLEX INCORPORATED AND SHOULD NOT BE USED WITHOUT WRITTEN PERMISSION |              |                        |  |  |
| BW   |                             | C                                     |            |                 |            |   |              |                        |  |  |