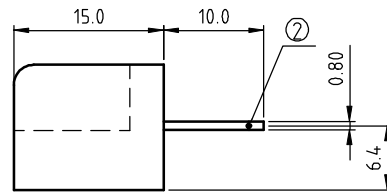
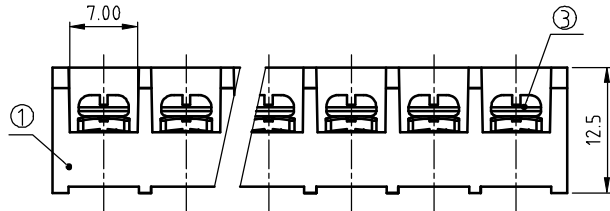
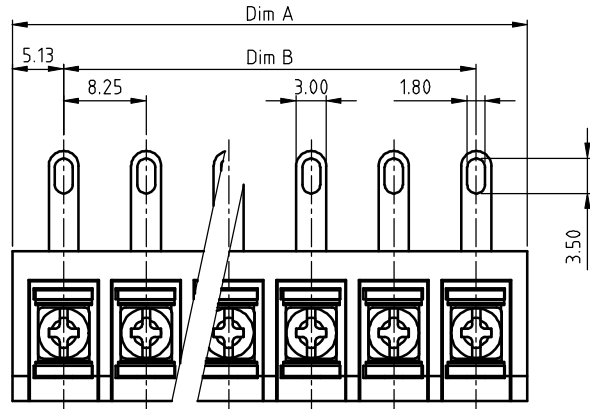


PRODUCT NUMBER	PITCH
YK333xx0x0J0G	8.25 mm



MATERIALS & ELECTRICAL

RATED VOLTAGE & CURRENT:	cULus / CQC
WITHSTAND VOLTAGE:	300 V, 20 A / 300 V, 32 A
INSULATION RESISTANCE:	AC 2500V/Min
OPERATING TEMPERATURE RANG:	1000 MΩ OR MORE AT DC 500 V
SCREW TORQUE VALUE:	-40 °C +115 °C
WIRE RANGE:	8.8 Lb-In
1) HOUSING:	22 - 12 AWG
2) TERMINAL:	Thermoplastic, UL 94 V-0 BLACK
3) TERMINAL SCREWS:	BRASS, 0.8t
APPROVAL:	STEEL,M3

APPROVAL:

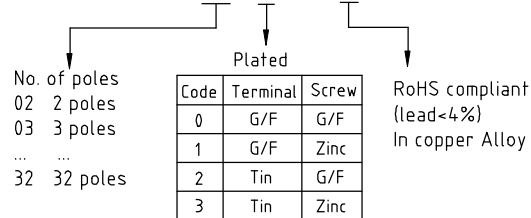
DIMENSION

Dim A	N×8.25+2.0
Dim B	(N-1)×8.25

N=Number of poles

Poles	Tolerance
2p-5p	±0.20
6p-10p	±0.25
11p-16p	±0.35
17p-24p	±0.40
25p-32p	±0.50

PART NO.: YK 333xx 0 x 0 JOG



mat'l. code		surface	tolerance	projection	product family
ASME Y14.5		ASME Y14.5	ASME Y14.5	TERMINAL BLOCK	TERMINAL BLOCK
ltr	ecn no	dr	date	title	
tolerances unless otherwise specified				TERMINAL BLOCK	
angles	X.±0.5		BARRIER TYPE		
flat	X.X±0.3		dwg no		
X'±1"	X.XX±0.1		sheet 1 of 1 size		
scale				A4	
dr				YK333xx0x0J0G	
enr				type	
chr				CUSTOMER Drawing	
appd					
sheet index		revision sheet	A		
1		1			