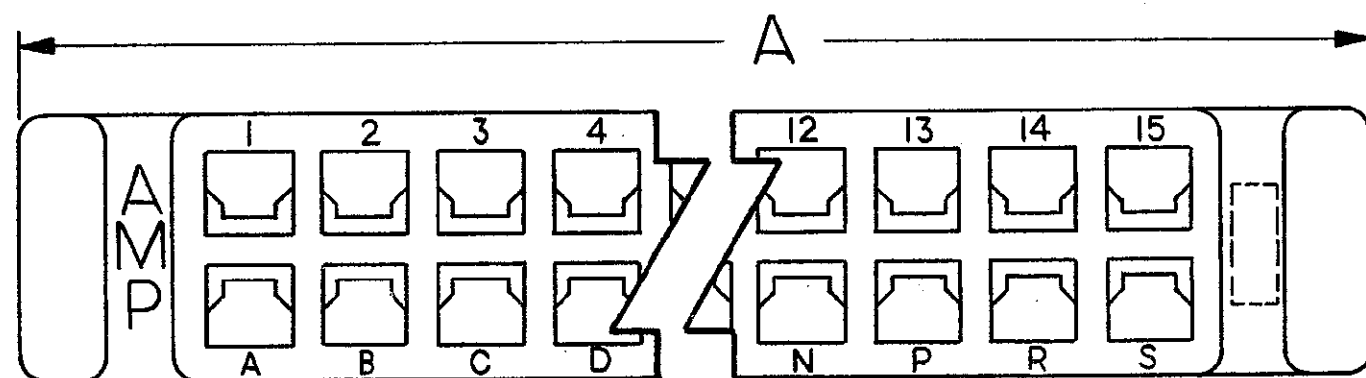
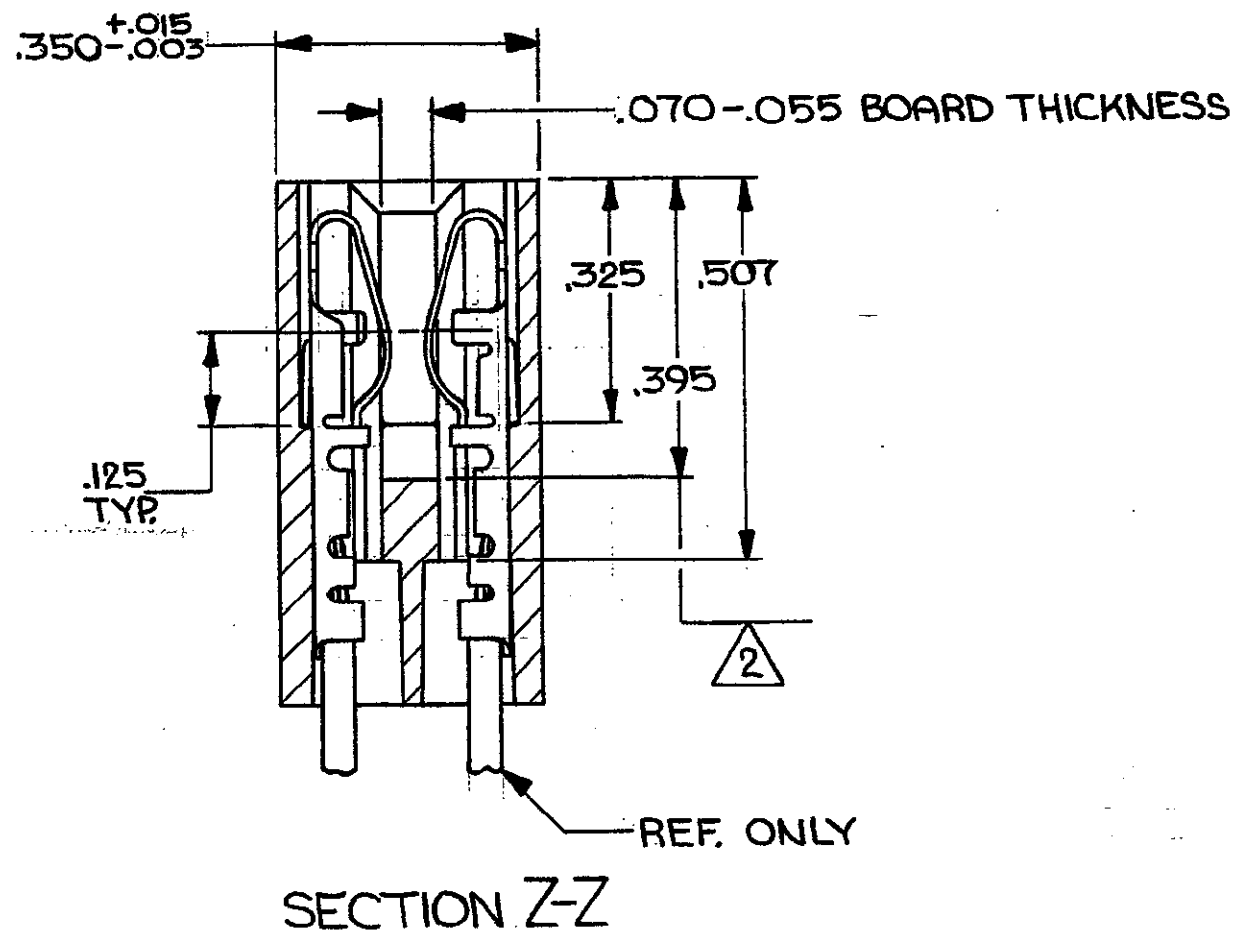
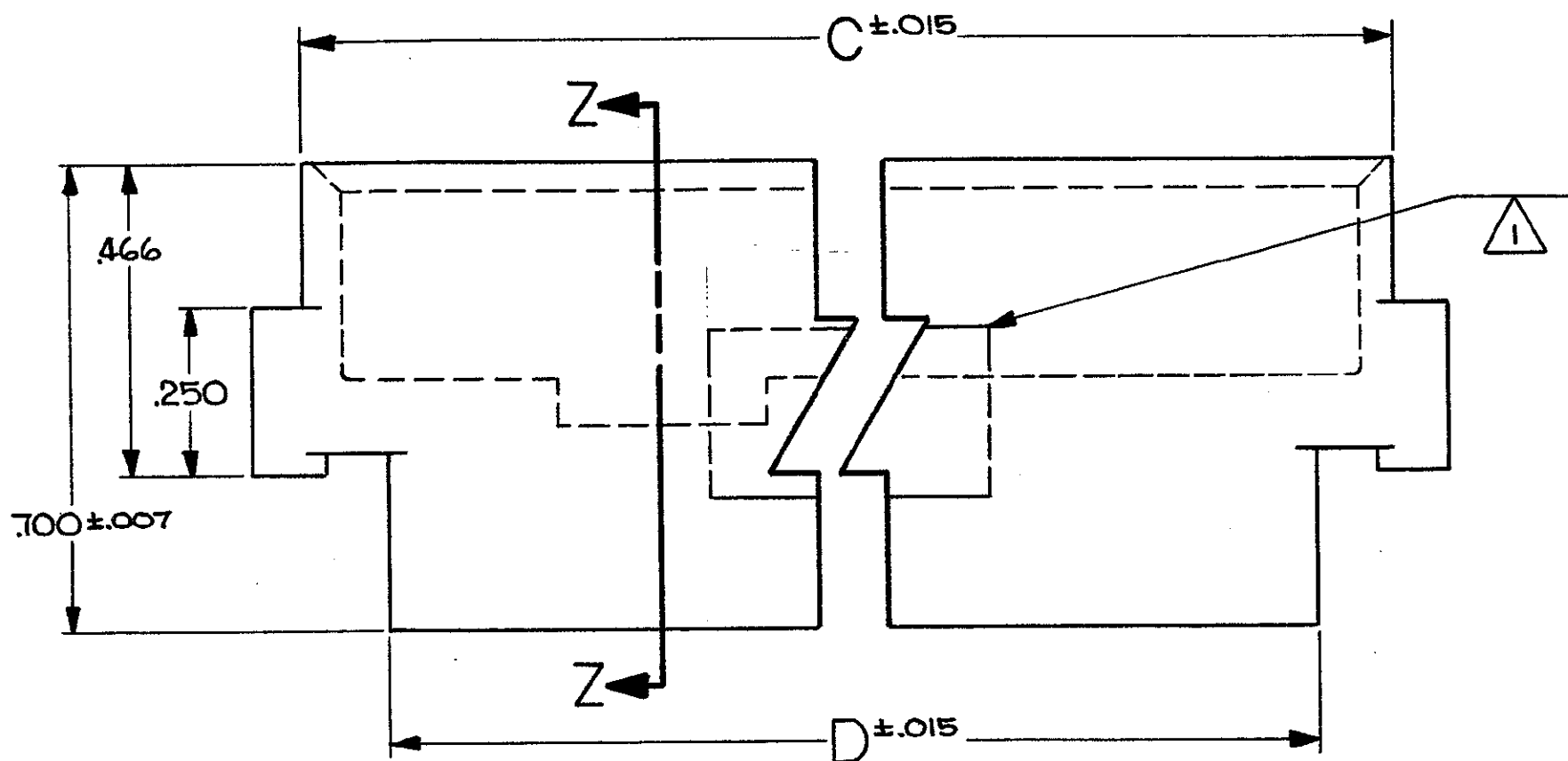
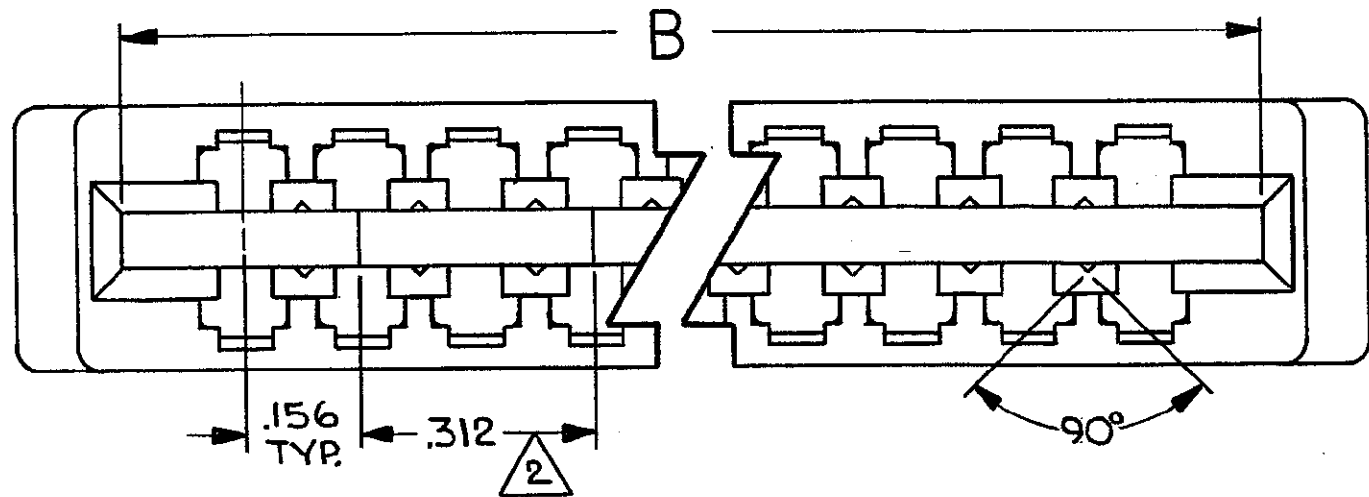


© COPYRIGHT 1980 BY AMP INCORPORATED, HARRISBURG, PA.
 ALL INTERNATIONAL RIGHTS RESERVED. AMP INCORPORATED PRODUCTS
 COVERED BY U. S. AND FOREIGN PATENTS AND/OR PATENTS PENDING.

REVISIONS						
P	F	ZONE	LTR	DESCRIPTION	DATE	APPROVED
			0	WAS 5112-426		
01			01	REVISED PER 7239	A.M.S. 3-9-81	
		A		REV PER EC 0320-344-97	25 NOV 97	NS



1 "AMP", PART NUMBER, & DATE CODE THIS AREA.
 2 THIS AREA IS RECESSED .070 BELOW DEPTH OF CARD SLOT.

UNLESS OTHERWISE SPECIFIED DIMENSIONS ARE IN INCHES. TOLERANCES ON: DECIMALS $\pm .010$ ANGLES \pm	CONTRACT NO	AMP INCORPORATED Harrisburg, Pa.				
	MATERIAL FIBERITE 4004 COLOR-BLACK	DR A.M. SHARPE 9-9-80	NAME HOUSING, AMP LEAF, MODIFIED EAR AND CARD SLOT			
FINISH //	CHK M. Smith 9-10-80	AS MOLDED P/N D	C	B	A	NO. OF POS. 15
	APPD S. E. Shyer 9-12-80	531271-2	2.376	2.621	2.506	2.782
	DESIGN APPD	OTHER APPD	SIZE C		CODE IDENT NO 00779	DRAWING NO 531271
			SCALE 4:1		SHEET 1 OF 1	