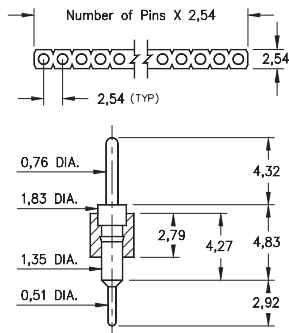
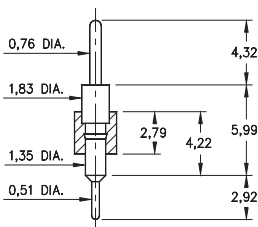


# INTERCONNECTS

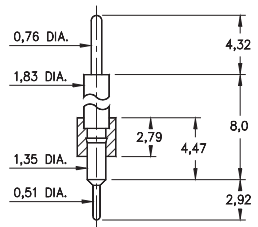
## SERIES 334 • 2,54 GRID INTERCONNECT HEADERS • SINGLE ROW STRIPS



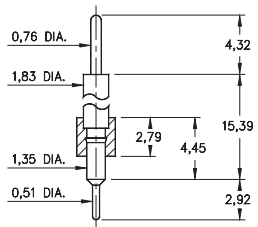
**FIG. 1**



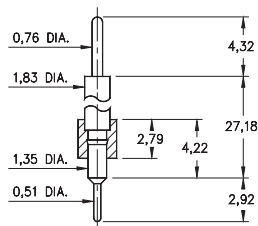
**FIG. 2**



**FIG. 3**



**FIG. 4**



**FIG. 5**

- Series 334 interconnect header strips are available in 5 lengths:

334...020 uses pin #3402 (L = 4,83)  
 334...010 uses pin #3401 (L = 5,99)  
 334...050 uses pin #3405 (L = 8,0)  
 334...000 uses pin #3400 (L = 15,39)  
 334...100 uses pin #3410 (L = 27,18)  
 See page 215 for details

- Strips come with 0,51 pluggable soldertails at one end and 0,76 tails at the other
- Insulators are high temperature thermoplastic, suitable for all soldering operations



### ORDERING INFORMATION

|   | Series 334...020                        | 0,51 / 0,76 Dia. Solder Tails           |
|---|---|---|
| <b>FIG. 1</b>   | 334-XX-1                                | -00-020000                              |
|   | Specify number of pins                  | 01-64                                   |
| <b>FIG. 2</b>   | Series 334...010                        | 0,51 / 0,76 Dia. Solder Tails           |
|   | 334-XX-1                                | -00-010000                              |
| <b>FIG. 3</b>   | Series 334...050                        | 0,51 / 0,76 Dia. Solder Tails           |
|   | 334-XX-1                                | -00-050000                              |
| <b>FIG. 4</b>   | Series 334...000                        | 0,51 / 0,76 Dia. Solder Tails           |
|   | 334-XX-1                                | -00-000000                              |
| <b>FIG. 5</b>   | Series 334...100                        | 0,51 / 0,76 Dia. Solder Tails           |
|   | 334-XX-1                                | -00-100000                              |
| <div style="display: flex; justify-content: space-around; align-items: center;"> <div style="border: 1px solid black; padding: 5px; background-color: #90EE90;">RoHS - 2<br/>2011/65/EU</div> <div style="border: 1px solid black; border-radius: 50%; padding: 5px;">XX=Plating Code<br/>See Below</div> <div style="border: 1px solid black; border-radius: 50%; padding: 5px;">For<br/>Electrical, Mechanical<br/>&amp; Enviromental Data,<br/>See page 264</div> </div> |   |   |
| <b>SPECIFY PLATING CODE XX=</b>   | 10 <span style="color: green;">◆</span> | 90                                      |
| Pin Plating   | 0,25µm Au                               | 5,08µm Sn/Pb                            |
|   |   | 40 <span style="color: green;">◆</span> |
|   |   | 5,08µm Sn                               |