

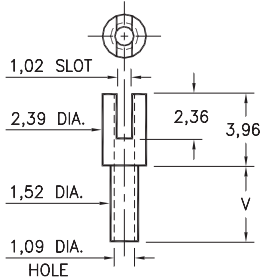
# MALE PCB PINS

## SOLDER TERMINALS SLOTTED

### 2303

2303-X-01-XX-00-00-07-0

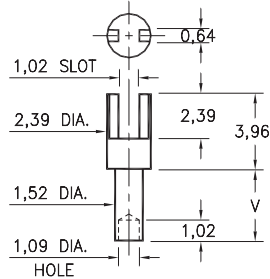
Swage mount in 1,63 hole



### 2323

2323-X-01-XX-00-00-07-0

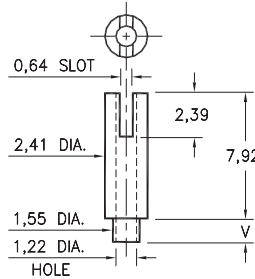
Swage mount in 1,63 hole



### 2322

2322-X-01-XX-00-00-07-0

Swage mount in 1,63 hole

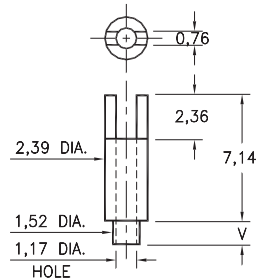


| Basic Part Number | Board Thickness | Length V |
|-------------------|-----------------|----------|
| 23XX-1            | 0,79            | 1,35     |
| 23XX-2            | 1,57            | 2,13     |
| 23XX-3            | 2,39            | 2,92     |
| 23XX-4            | 3,18            | 3,73     |

### 2320

2320-X-01-XX-00-00-07-0

Swage mount in 1,63 hole

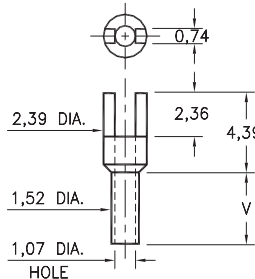


| Basic Part Number | Board Thickness | Length V |
|-------------------|-----------------|----------|
| 2320-1            | 0,79            | 1,35     |
| 2320-2            | 1,57            | 2,13     |
| 2320-3            | 2,39            | 2,92     |

### 2328

2328-X-01-XX-00-00-07-0

Swage mount in 1,63 hole

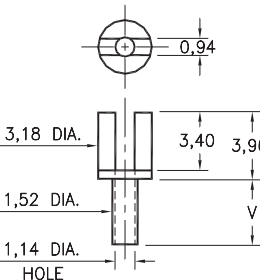


| Basic Part Number | Board Thickness | Length V |
|-------------------|-----------------|----------|
| 2328-1            | 0,79            | 1,57     |
| 2328-2            | 1,57            | 2,39     |
| 2328-3            | 2,39            | 3,18     |
| 2328-4            | 3,18            | 3,96     |

### 2520

2520-X-01-XX-00-00-07-0

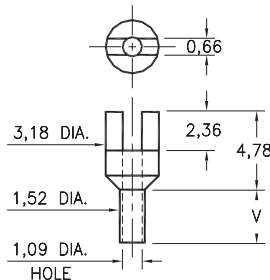
Swage mount in 1,63 hole



### 2517

2517-X-01-XX-00-00-07-0

Swage mount in 1,63 hole



| Basic Part Number | Board Thickness | Length V |
|-------------------|-----------------|----------|
| 25XX-1            | 0,79            | 1,57     |
| 25XX-2            | 1,57            | 2,39     |
| 25XX-3            | 2,39            | 3,18     |
| 25XX-4            | 3,18            | 3,96     |

#### SPECIFICATIONS:

**Pin Material:** Brass Alloy 360, 1/2 Hard  
(Swage pins are annealed)

**Dimensions:** Millimeters

**Tolerances On:** Lengths:  $\pm 0,13$   
Diameters:  $\pm 0,051$   
Angles:  $\pm 2^\circ$



ORDER CODE: **XXXX - X - 01 - XX - 00 - 00 - 07 - 0**

BASIC PART #

SPECIFY PIN FINISH:

- 01 5,08μm TIN/LEAD OVER NICKEL
- ◆ 80 5,08μm TIN OVER NICKEL (RoHS)
- ◆ 44 7,62μm SILVER OVER COPPER (RoHS)
- 50 7,62μm ELECTRO-SOLDER  
(60/40 SnPb)

